

# Intraday Liquidity Analytics

## **GAIN QUICK INSIGHT INTO GLOBAL LIQUIDITY.**

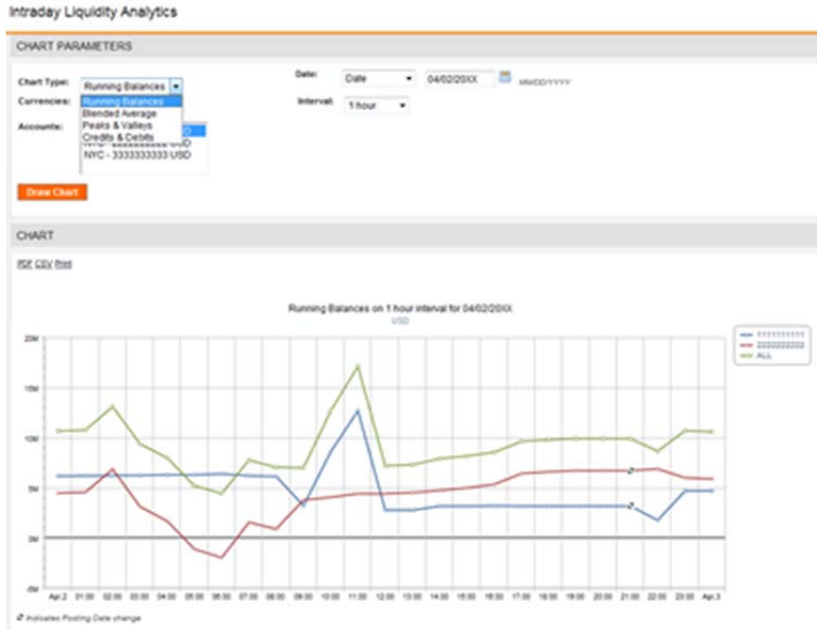
TODAY, TREASURERS HAVE MANY REASONS TO FOCUS ON GLOBAL LIQUIDITY, INCLUDING (BUT NOT LIMITED TO) REGULATORY CHANGES, A DESIRE TO REDUCE EXPENSES, AND A COMMITMENT TO STRENGTHENING THEIR BANK PARTNERSHIPS.

BNY Mellon can help. Using our Intraday Liquidity Analytics solution, available via TreasuryEdge® – our electronic banking portal – you can stay on top of your account activity and, with a few clicks of a PC mouse, reveal trends and transactions that may impact your access to working capital. The solution allows you to better manage costs associated with intraday liquidity, reduce intraday overdrafts and handle payment flows more easily and efficiently.

Sample screens of the service, as shown on the following pages, illustrate the information value it offers and how, step by step, you can easily navigate to access the level of detail needed to support your decision making.

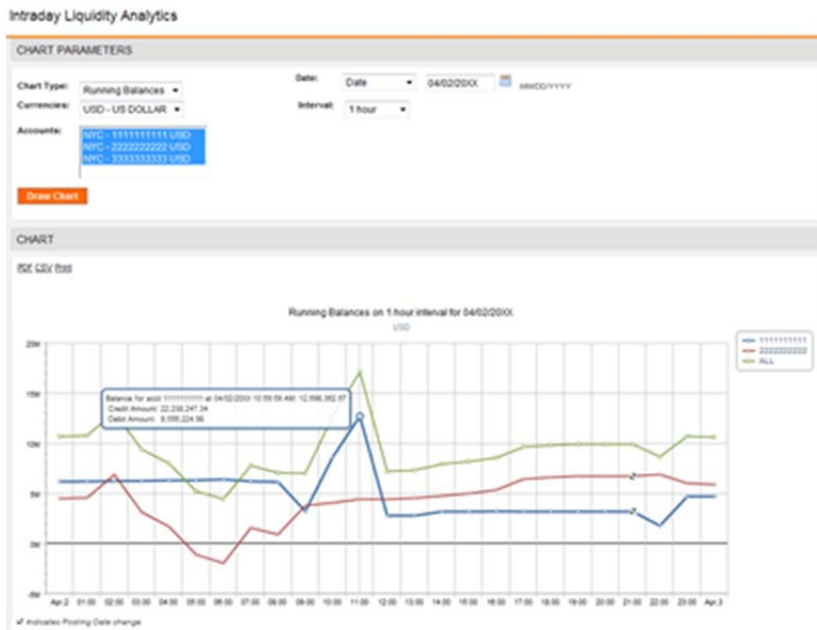
## Step 1: Make Your Initial Selection

Choose the options you would like to see (e.g., running balances, credits and debits, blended average, peaks and valleys) as well as the accounts and dates in question. A chart like the one below will appear, displaying the accounts you have selected, as well as the summary of the totals.



## Step 2: Obtain Summary Detail

By using your PC mouse to hover over a specific peak or valley in your history timeline, you can obtain a summary detail for that specific point in time.



### Step 3: Access Transaction Detail

Simply click on the hover-over to find even more detailed information for each transaction that contributes to the total.

#### Intraday Liquidity Analytics

##### TRANSACTIONS

Series 1111111111  
 Date/Time Interval 04/04/20XX 10:30:00 AM - 04/04/20XX 10:44:59 AM  
 Starting Balance 118,077,816.88  
 Balance at 04/04/20XX 10:44:59 AM 719,392,537.28  
 Number of Transactions 9

Account	Type	Amount	Time Processed (ET)	Posting Date	Ref Number
▼ 1111111111	INC INTRNL MONEY TRF	155,448.47	04/04/20XX 10:31:13 AM	04/04/20XX	FMM123456789XXXX
01RRH RCV=1234DEMO TRUST OF NE*FNC*CTR*BNF=1AC1234*THE DEMO BANK* EL CORPORATE GROUP DDA*3 DEMO BANK CTR RM 3630*PITTSBURGH, PA 15259-0001*OR G=D1184813*THE DEMO INSTITUTE*TEST TEST TRUST*OOB=D1 164XXX*THE DEMO INSTITUTE*TEST ABC*220 DEMO FARM RD*DEMOTEST, NC 27707-8110*OB=DUMMY OPERATING APZZ2000ZZZ* TRID#FMM123456789XXXX TYPE=BT NETREF#FMM123456789XXXX 10:30 04-04-XX					
▶ 1111111111	OUTGOING MONEY TRANSFR	325,158.39	04/04/20XX 10:31:13 AM	04/04/20XX	FTS123456789XXXX
▶ 1111111111	OUTGOING MONEY TRANSFR	2,875.25	04/04/20XX 10:31:13 AM	04/04/20XX	FTS123456789XXXX
▶ 1111111111	OUTGOING MONEY TRANSFR	364.96	04/04/20XX 10:31:13 AM	04/04/20XX	FTS123456789XXXX
▶ 1111111111	MISC DEBIT	15,000,000.00	04/04/20XX 10:32:09 AM	04/04/20XX	
▶ 1111111111	INCOMING MONEY TRF	546.24	04/04/20XX 10:36:30 AM	04/04/20XX	FD123456789XXXX
▶ 1111111111	INCOMING MONEY TRF	45,059.27	04/04/20XX 10:36:30 AM	04/04/20XX	FD123456789XXXX
▶ 1111111111	OUTGOING MONEY TRANSFR	51,551.74	04/04/20XX 10:36:30 AM	04/04/20XX	FTS123456789XXXX
▶ 1111111111	OUTGOING MONEY TRANSFR	42,454.37	04/04/20XX 10:39:11 AM	04/04/20XX	FTS123456789XXXX

### For More Information

Contact your BNY Mellon representative, send an e-mail to [treasury@bnymellon.com](mailto:treasury@bnymellon.com) or call 1 800 424 3004. Our experts stand ready to answer your questions and help you apply our global liquidity review process to your particular situation.

---

[bnymellon.com](http://bnymellon.com)

BNY Mellon is a global financial services company focused on helping clients manage and service their financial assets, operating in 35 countries and serving more than 100 markets. BNY Mellon is a leading provider of financial services for institutions, corporations and high-net-worth individuals, offering superior investment management and investment services through a worldwide client-focused team. BNY Mellon is the corporate brand of The Bank of New York Mellon Corporation and may also be used as a generic term to reference the Corporation as a whole or its various subsidiaries generally and may include The Bank of New York Mellon, One Wall Street, New York, New York 10286, a banking corporation organized and existing pursuant to the laws of the State of New York and operating in England through its branch at One Canada Square, London E14 5AL, England. The information contained in this brochure is for use by wholesale clients only and is not to be relied upon by retail clients. Not all products and services are offered at all locations.

This brochure, which may be considered advertising, is for general information and reference purposes only and is not intended to provide legal, tax, accounting, investment, financial or other professional advice on any matter, and is not to be used as such. BNY Mellon does not warrant or guarantee the accuracy or completeness of, nor undertake to update or amend the information or data contained herein. We expressly disclaim any liability whatsoever for any loss howsoever arising from or in reliance upon any of this information or data.

Trademarks and logos belong to their respective owners.

©2015 The Bank of New York Mellon Corporation. All rights reserved.

04/2015